

# TEENSPIRIT MADDINGTON 18+

Term 2 2019

Friday 3rd May  
6:00pm - 9:00pm

Kenwick Social  
Flower Power Party

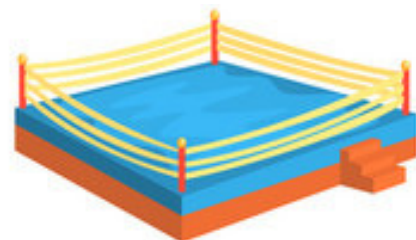
\$10



Saturday 11th May  
6:00pm - 10:00pm

Southern Hemisphere  
Wrestling  
Trial by Fire event

\$20



Saturday 18th May  
10:00am - 2:00pm

Chung Wah Cultural  
Festival

\$20



PERTH CHUNG WAH  
CULTURAL FESTIVAL  
珀斯中华文化节

Saturday 25th May  
10:00am - 2:00pm

Oasis Super Golf

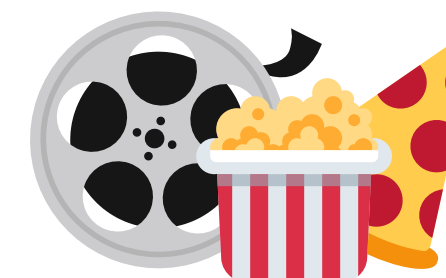
\$20



Saturday 1st June  
6:00pm - 10:00pm

Pizza, PJ & Popcorn  
Movie night

\$15



Friday 7th June  
6:00pm - 9:00pm

Kenwick Social  
Pyjama Party

\$10



Saturday 15th June  
10:00am - 2:00pm

AFL Game  
Freo Dockers VS  
Port Adelaide

\$35



Saturday 22nd June  
10:00am - 2:00pm

Ice Skating

\$20



Saturday 29th June  
10:00am - 2:00pm

Supanova  
Pop Culture Expo

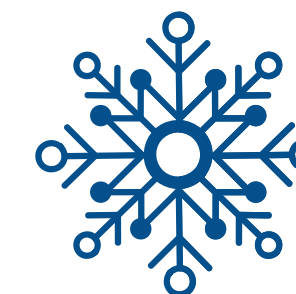
\$40



Friday 5th July  
6:00pm - 9:00pm

Kenwick Social  
Winter Wonderland

\$10





# TEENSPIRIT MADDINGTON 18+ BOOKING FORM

<b>Individual Name:</b>	
<b>Contact Name and Number:</b>	
<b>Dietary Requirements:</b>	
<b>Additional Comments:</b>	

Date	Activity	Contribution	Booking
Friday 3rd May	Kenwick Social- Flower Power	\$10	
Saturday 11 <sup>th</sup> May	Wrestling Match	\$20	
Saturday 18 <sup>th</sup> May	Chung Wah Cultural Fest	\$20	
Saturday 25 <sup>th</sup> May	Oasis Super Golf	\$20	
Saturday 1 <sup>st</sup> June	Movie Night (in centre)	\$15	
Friday 7 <sup>th</sup> June	Kenwick Social- Pyjama Party	\$10	
Saturday 15 <sup>th</sup> June	AFL Game	\$35	
Saturday 22 <sup>nd</sup> June	Ice Skating	\$20	
Saturday 29 <sup>th</sup> June	Supanova	\$40	
Friday 5 <sup>th</sup> July	Kenwick Social- Winter Party	\$10	

Please complete the booking form by marking which activities you would like to book in to. Confirmations will be sent after the closing date. Return the form to [groups@directions.asn.au](mailto:groups@directions.asn.au) or mail PO Box 443, Maddington, 6989, WA no later than Friday 10th May 2019.

Additional information including location will be provided upon booking. If you have any queries regarding specific activities please contact us by email or phone (08) 92624900.

The stated contribution covers activity cost and food. Additional expenses e.g. souvenirs, drinks are to be covered by the individual.

Companion cards and Smart Riders are required for the majority of activities.